

広距離レンジ反射センサ

Wide range Photo reflector

反射センサ/SG139

Photo reflector/SG139

開発品

UNDER DEVELOPMENT

製品概要 Product outline

広い距離範囲で一定以上の相対出力を実現した、反射センサ

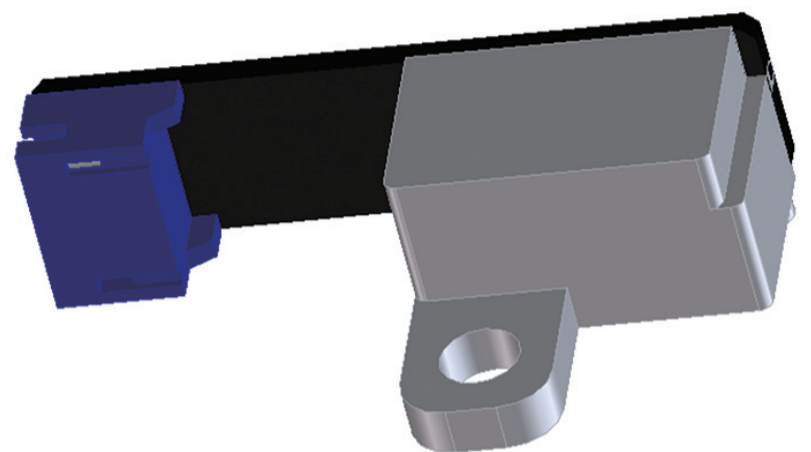
By combining the two outputs, the distance characteristic that achieves a relative output exceeding a certain level over a wide range of distance is realized.

用途 Applications

プリンター、ATM Printer, ATM

特長 Features

外形寸法:30×18×10mm Size: 30×18×10mm



最大定格 Maximum Ratings

Item	Symbol	Rating	Unit
Supply voltage	Vcc	7	V
Output voltage	Vo	7	°C
Operating Temp.	Topr.	-0 ~ +60	°C
Storage Temp.	Tstg.	-20 ~ +80	°C

電気的光学的特性 Electro-optical characteristics

Item	Symbol	Conditions	MIN	TYP	MAX	Unit
Operating Voltage	Vcc	—	—	5	—	V
Output voltage	V _{OUT}	Vcc = 5V, d = 2 mm	2	—	—	V
		Vcc = 5V, d = 8 mm	2	—	—	V
Relative output voltage *1	—	Vcc = 5V, d = 2~8 mm	85	100	115	%

*1 ピーク出力に対する相対値 Relative value to peak output

Distance characteristic example

